

300 Series

METAL CONTROL VALVES

State-of-the-art automatic control valves are designed to withstand the most demanding requirements of water system control.



Long-lasting performance



Versatility



High durability

/ Benefits & Features

- **Long-lasting performance** Available with an extended range of unique control functions that cater to both special and standard needs
- **Versatility** The valves are available in globe and angle shapes with the widest range of accessories in the market
- **Outstanding design** A unique rigid mechanism that provides ultimate hydraulic control in any given condition

/ Specifications & Recommendations

- Maximum Pressure – 16 bar (230psi) and 25 bar (365psi)
- Minimum Recommended flow – 1m³/h (5gpm)
- Minimum Operating Pressure – 0.5 bar (7psi)

→ Hydraulic Performance

Shape	Globe Type																Angle Type								
	Diameter	inch	1½	2	2½	3	4	6	8	10	12	14	16	18	20	24	28	32	1½	2	3	4	6	8	10
		mm	40	50	65	80	100	150	200	250	300	350	400	450	500	600	700	800	40	50	80	100	150	200	250
Flow rate factor	Kv		43	43	43	115	167	407	676	1160	1600	1600	3000	3150	3300	6500	6500	6500	60	60	140	190	460	770	1310
	Cv		50	50	50	133	195	475	790	1360	1900	1900	3500	3700	3860	7600	7600	7600	70	70	164	222	537	900	1533

→ Technical Dimensions

for Globe Flanged Type

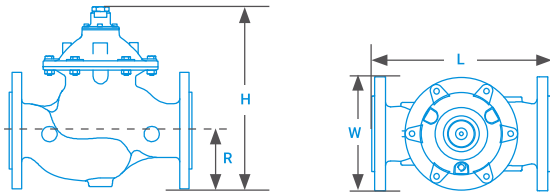
Diameter	1½	2	2½	3	4	6	8	10	12	14	16	18	20	24	28	32
	40	50	65	80	100	150	200	250	300	350	400	450	500	600	700	800
L mm/inch	230/9 ^{1/16}	230/9 ^{1/16}	290/11 ^{3/8}	310/12 ^{3/16}	350/13 ^{3/4}	480/18 ^{7/8}	600/23 ^{5/8}	730/28 ^{3/4}	850/33 ^{7/16}	980/38 ^{9/16}	1100/43 ^{5/16}	1200/47 ^{1/4}	1250/49 ^{3/16}	1450/57 ^{1/16}	1650/64 ^{15/16}	1850/72 ^{7/8}
H mm/inch	185/7 ^{5/16}	185/7 ^{5/16}	185/7 ^{5/16}	230/9 ^{1/16}	240/9 ^{7/16}	330/13	390/15 ^{3/8}	520/20 ^{1/2}	635/25	635/25	855/33 ^{5/8}	855/33 ^{5/8}	855/33 ^{5/8}	1574/61 ^{15/16}	1675/65 ^{15/16}	1675/65 ^{15/16}
W mm/inch	153/6	170/6 ^{11/16}	185/7 ^{3/16}	200/7 ^{7/8}	235/9 ^{1/4}	330/13	415/16 ^{5/16}	525/20 ^{11/16}	610/24	610/24	850/33 ^{7/16}	850/33 ^{7/16}	850/33 ^{7/16}	1100/43 ^{3/16}	1100/43 ^{3/16}	1090/42 ^{5/16}
R	82.5/3 ^{1/4}	82.5/3 ^{1/4}	92.5/3 ^{5/8}	100/3 ^{15/16}	110/4 ^{9/16}	142.5/5 ^{5/8}	172.5/6 ^{3/4}	205/8 ^{1/16}	230/9	272/10 ^{11/16}	290/11 ^{7/16}	310/12 ^{3/16}	357.5/14 ^{1/16}	490/19 ^{5/16}	498/19 ^{5/8}	603/23 ^{3/4}
Weight (kg/lbs)	12/26	12/26	13/29	22/49	37/82	80/176	157/346	245/540	405/893	510/1124	822/1812	945/2083	980/2160	1950/4299	2070/4560	2600/5730
Control chamber volume	0.1/0.02	0.1/0.02	0.1/0.02	0.3/0.08	0.7/0.2	1.5/0.4	4.3/1.1	9.7/2.6	18.6/4.9	18.6/4.9	50/13.2	50/13.2	50/13.2	84/22.2	84/22.2	84/22.2

for Angle Type

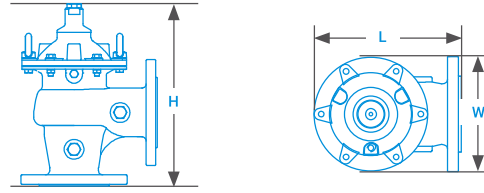
Diameter	inch	2"	3"	4"	6"	8"	10"
	mm	50	80	100	150	200	250
L	mm/inch	208 / 83/16	250 / 913/16	295 / 111/16	405 / 16	505 / 197/8	585 / 23
H	mm/inch	240 / 97/16	415 / 165/16	445 / 171/2	570 / 227/16	635 / 25	832 / 323/4
W	mm/inch	170 / 611/16	200 / 77/8	235 / 91/4	330 / 13	415 / 165/16	495 / 191/2
Weight (kg/lbs)		12 / 26	20 / 44	37 / 81	76 / 167	150 / 330	234 / 550

Note: Minimum quantities may apply for S-300 angle valves

Globe Flanged Type

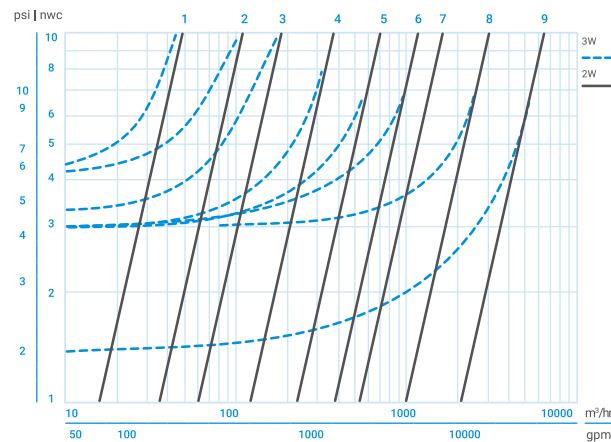


Angle Type



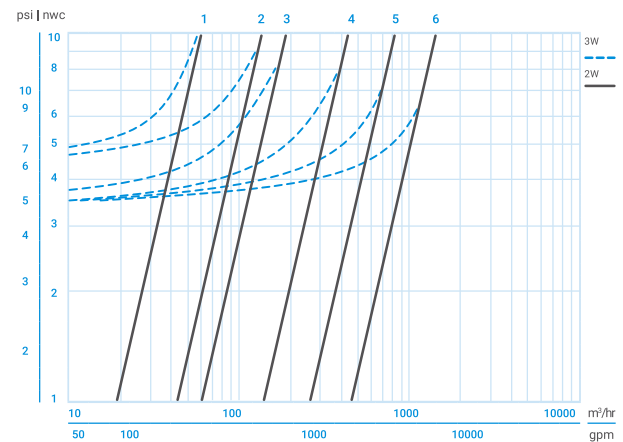
→ Head Loss

Globe Flanged Type



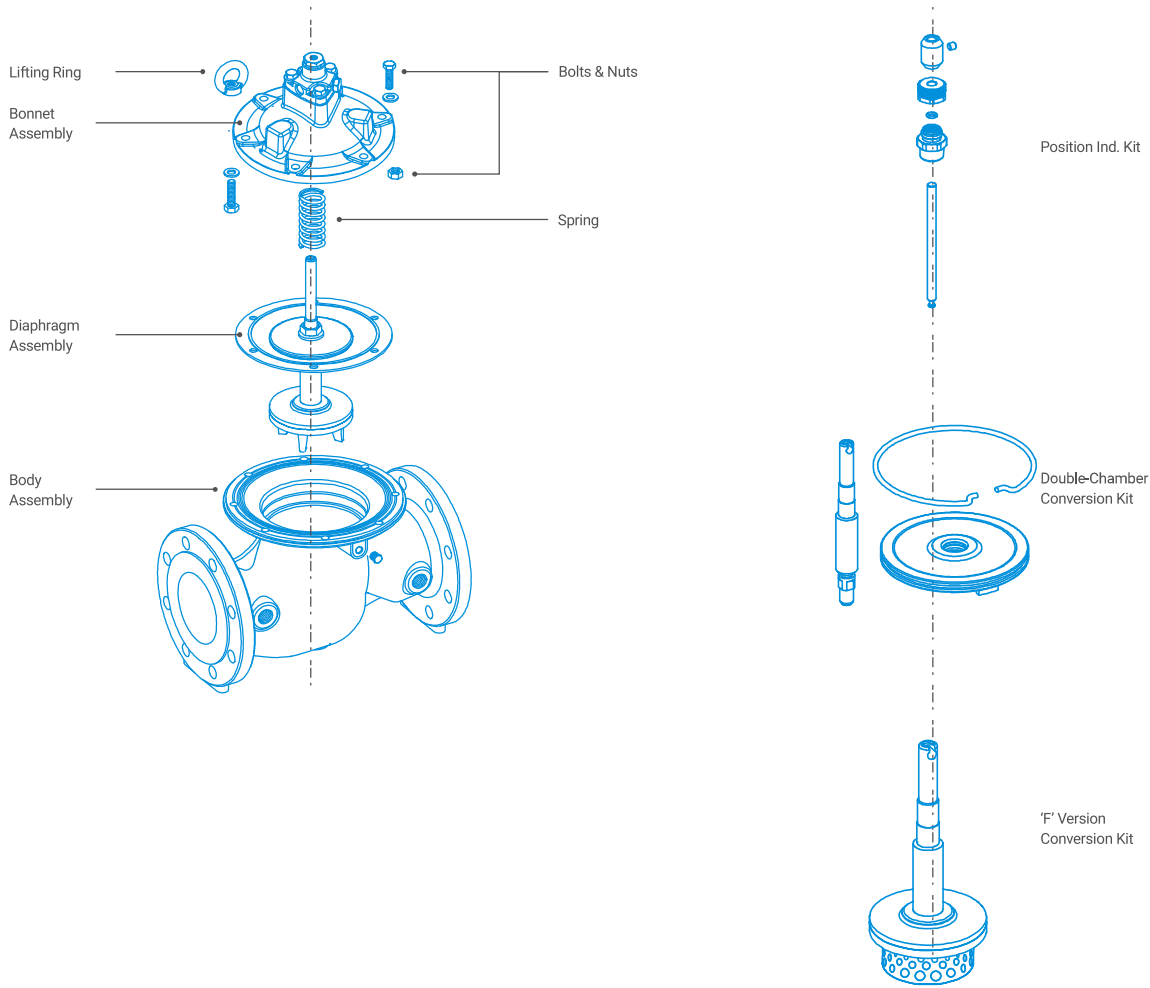
- 1= 1½", 2", 2½" / 40, 50, 65mm
- 2= 3" / 80mm
- 3= 4" / 100mm
- 4= 6" / 150mm
- 5= 8" / 200mm
- 6= 10" / 250mm
- 7= 14", 12" / 300, 350mm
- 8= 16" / 400mm
- 9= 32", 28", 24" / 600, 700, 800mm

Angle Type



- 1= 1½", 2" / 40, 50mm
- 2= 3" / 80mm
- 3= 4" / 100mm
- 4= 6" / 150mm
- 5= 8" / 200mm
- 6= 10" / 250mm

→ Components



→ Material Specifications

#	Part	Material	*Optional
1	Body & cover	Ductile iron GGG50 (ASTM A-536)	Cast steel A-216 WCB Cast SST CF8M (316) Ni aluminum bronze Others
2	Main valve internals	SST, bronze and coated steel	SST 316, hastelloy, duplex
3	Spring	SST 302	SST 316, inconel
4	Diaphragm	Nylon fabric reinforced EPDM (WRAS and NSF approved)	NBR, viton
5	Seals	EPDM	NBR, viton
6	Coating	Fusion bonded epoxy (FBE) RAL 5010	UV protected FBE RAL 5010 FBE RAL 3002 (fire red) UV protected FBE RAL 3002
7	Control trim: fittings and control devices	Brass	SST 316, duplex
8	Control trim: tubes	Reinforced, heavy-duty polypropylene	Copper, SST 316, duplex

* Optional parts for special resistance